

LONGSPAN



Versatile Clip-together Shelving

LINK RAYONNAGE
MAROC

EURO SHELVING



Euro Shelving

A Storage System For Every Working Environment

Wherever there's a need for storage, there's a job for Euro shelving. From stand alone single units to multi-level storage bays, Euro shelving is the single, simple to use, versatile solution.

Modular in design for ease of assembly, Euro shelving offers almost limitless scope for the creation of customized storage facilities; and a complementary range of accessories extends its capabilities still further.

Euro shelving features unique shelf support clips that simply slot into place giving firm support for even the heaviest loading requirements, yet allowing for quick and easy repositioning whenever required. Standard shelves will support loads of up to 200 kg. and when even that's not enough, there's the option to specify heavy or extra heavy duty for the more demanding storage environment.



FEATURES

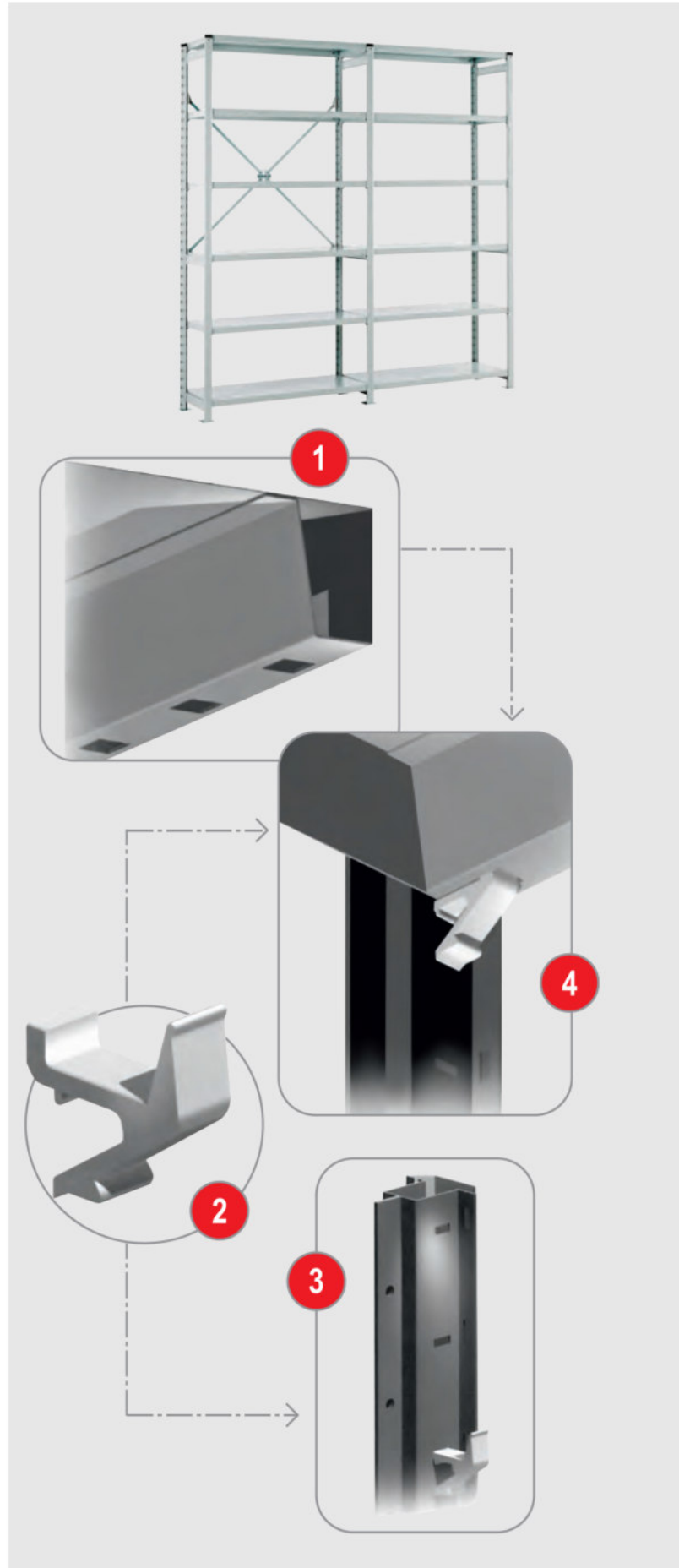


Euro Shelving Features:

Euro shelving offers you a choice of components – side frames in a variety of depths, shelves in three duties, and shelf support clips for easy fixing.

Euro shelving is available open backed or clad to match your precise specifications.

- 1- Shelves utilize box section construction at the front and rear for load bearing strength and rigidity.
- 2- Shelf support clips have been specially developed for the Euro shelving system. For safety, their design helps prevent accident shelf dislodgement whilst being extremely easy to use.
- 3- Simply slot the clip into the uprights to create an extremely rigid structure yet allowing for quick and easy re-positioning of shelves.
- 4- Shelves locate at 50 mm increments as standard for maximum versatility in shelf positioning.



Medium Span Shelving



LINK **RAYONNAGE**
MAROC





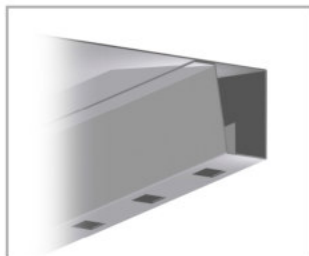
Where Quality
Meets Innovation



Link Misr Medium span

Beamless Medium Span System

Height:	1200 to 5000 mm
Frame depth:	300 to 900 mm
Clear Entry:	1300 to 1800 mm



Shelf box section construction at the front and rear for load bearing strength and rigidity

Medium Span System

Height:	1200 to 5000 mm
Frame depth:	400 to 1200 mm
Clear Entry:	1000 to 3000 mm



The unique one piece beam rotates giving you a choice of step or flat top



With conventional short span shelving, space is lost if goods do not fit exactly.



With Linkmisr Medium span Shelving, you get the most from your storage, with lost space kept to a minimum.



Large or awkward items are easily stored, and stock can be changed quickly and simply.



Designed For Performance Whatever Your Needs

Linkmisr Medium span system incorporates a wide range of Shelves, beams and frames, making it easy to customise to meet your precise storage needs. Medium bays can be combined in the same unit for efficient storage of a wide range of stock items. Purpose designed accessories are also available to extend the versatility of the Linkmisr medium span system still further.



Link Medium Span Shelving - Versatility As Standard To Maximise Your Storage

Longspan offers you virtually unlimited opportunities to expand your storage capacity, whether you are storing boxes, cartons, tubes or wires. Medium spans of up to 2925 mm also make Medium span ideal for a wide range of big and bulky items.

- Quick and easy installation, with no special tools and saves you time and money
- Shelves are easily adjusted to your needs as stock patterns change

Link Medium Span

is the perfect solution no matter what you need to store - from small components to heavy cartons. Fast and easy to assemble, Medium span uses' modular design and a bolt-free lock-in system which requires no special tools, giving you maximum storage in minutes - whatever your available space.



LONGSPAN

the heavyweight storage solution that simply clips together.

Accessories and Specification



FRAME UPRIGHTS



Blue
RAL 5017

FRAME UPRIGHTS



GRAPHITE GREY
RAL 7024

BEAMS & ACCESSORIES



LIGHT GREY
RAL 7035

standard component colours

Finish

Longspan racking components are phosphate pre-treated, then powder coated, durable high quality paint finish. 'House' colours available on request.

Material

All Longspan components are made from high quality steel. Every stage in the manufacturing process is subject to stringent quality procedures, developed through years of experience.

Swatches shown give an approximate colour guide

LONGSPAN

in action...

LONGSPAN in action...

You'll find Longspan at work almost everywhere. In business, industry and the public sector, there's no end to the applications for one of the world's most adaptable shelving systems.

From simple stand-alone shelf units to automated order-picking installations, Longspan gives the same reliability, quality and performance. Automotive components, library books, stationery, museum artefacts, even geological samples - these and hundreds of other items are safely stored away in shelving schemes constructed from Longspan.

Use Longspan as a space saver, maximising height in narrow-aisle storage installations; use it in conjunction with mobile shelving schemes for high density storage where space is at a premium; use it in shops and offices, schools and hospitals; use it anywhere and everywhere there's a need for efficient, hard-wearing storage.



LONGSPAN

the heavyweight storage solution that simply clips together.

Heavy Duty

The ultimate versatile heavy duty storage system, Longspan shelving is limited only by your imagination. Whether you're planning a simple low-rise shelving set-up or a large scale heavy duty storage facility, Longspan fits the bill.

If you thought you needed an engineering degree to build shelving, think again. Longspan is ingenious in its simplicity. A small shelf unit can be assembled in minutes, and even the most ambitious schemes are easily realised with Longspan's brilliantly designed clip-together components.

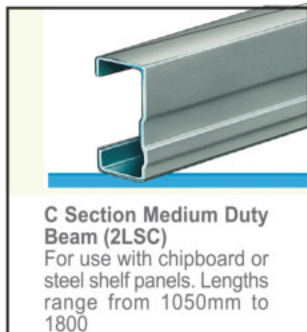
Beams fasten simply and securely onto uprights and are easily adjusted. Easy-to-fit locking clips prevent accidental dislodgement. Once the frames and beams are up, shelving materials simply drop into place and the system's ready to go! Nothing could be simpler.

It's hard to believe that shelving as secure and hard wearing as Longspan can be assembled in such a short time. But once built, Longspan stays built - even in the toughest industrial environments.

For a shelving system that combines quality and ease of assembly, there's only one choice – Longspan. And like every product in our range, it comes with the added reassurance of international quality standards.



Choice of beams for all applications



- 1 Galvanised or painted Steel Shelf Panels span across beams to form a solid steel shelf.
- 2 Chipboard Shelving
- 3 Box beam.
- 4 Beam Tie.
- 5 Stepped Beam.
- 6 Shelf Cladding Support - Box Beam.
- 7 Lateral Dividers can be used with specially pierced shelf panels.
- 8 Foot Plate clip-on or bolt-on, provides positive floor fixing for added stability.
- 9 Mesh Panels frames can be supplied as open, mesh clad or steel clad.
- 10 Frame available in heights from 1200mm to 3900mm and depths of 450mm to 1200mm.
- 11 Frame Joining Unit.





Link is a leading industrial company specialized in manufacturing shelving and racking systems. We serve Egyptian, Arabian and African markets. The products are manufactured under license from Link 51 (UK). Link Misr was established in Egypt in 1993 in the new industrial city of Tenth of Ramadan, located 35 Km from Cairo. The product range includes shelving systems for various applications to meet different customer requirements: Light load

shelves, medium load shelves and heavy load racks. Our clients include pharmaceutical companies, hospitals, automotive companies, hotels, clubs, ready made garments companies, petroleum companies, banks, the food industry and supermarkets, among many other industrial and business sectors. Link Misr provides complete solutions including design, supply, installation, and after sales services with the help of a highly qualified team trained by our licensors Link51 (UK).

LINK RAYONNAGE
MAROC



105

Factory:
Address: 10 th of Ramadan City - Zone B4 - Area 30
Tel & Fax: (+2015) 379 340 - 382 641/2/3/4
www.linkmisr.com

Follow Us:

